

HASLAM'S
New Homes

Plot 76 Huntercombe Lane South
Taplow, Maidenhead, SL6 0PQ
£335,000



Plot 76 Huntercombe Lane Taplow, Maidenhead, SL6 0PQ

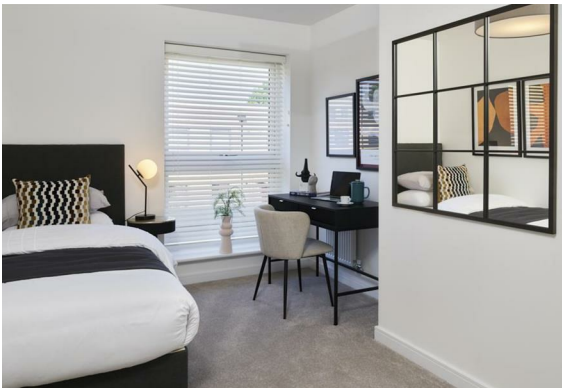
Up to 5% deposit contribution* when you reserve this apartment.

A stylish 2-bedroom apartment on the second floor of Lambourne House, Huntercombe Walk, in the sought-after village of Burnham, near Maidenhead. The property features a bright open-plan living, dining, and kitchen area with dual-aspect windows, modern fitted units, and stainless steel appliances. The main bedroom includes an en-suite, with a second bedroom and separate bathroom. An entrance hall with a storage cupboard adds practicality to this well-designed home.

Huntercombe Walk not only promises a sophisticated living experience but also enjoys an enviable location, surrounded by stunning parkland. With excellent transport links, including proximity to the M4 and the convenience of the Elizabeth Line at Taplow Station, commuting to Windsor, Maidenhead, Slough, London, and beyond becomes effortlessly accessible.

*T&C's apply. Speak to our sales advisors for more information.

Measurements





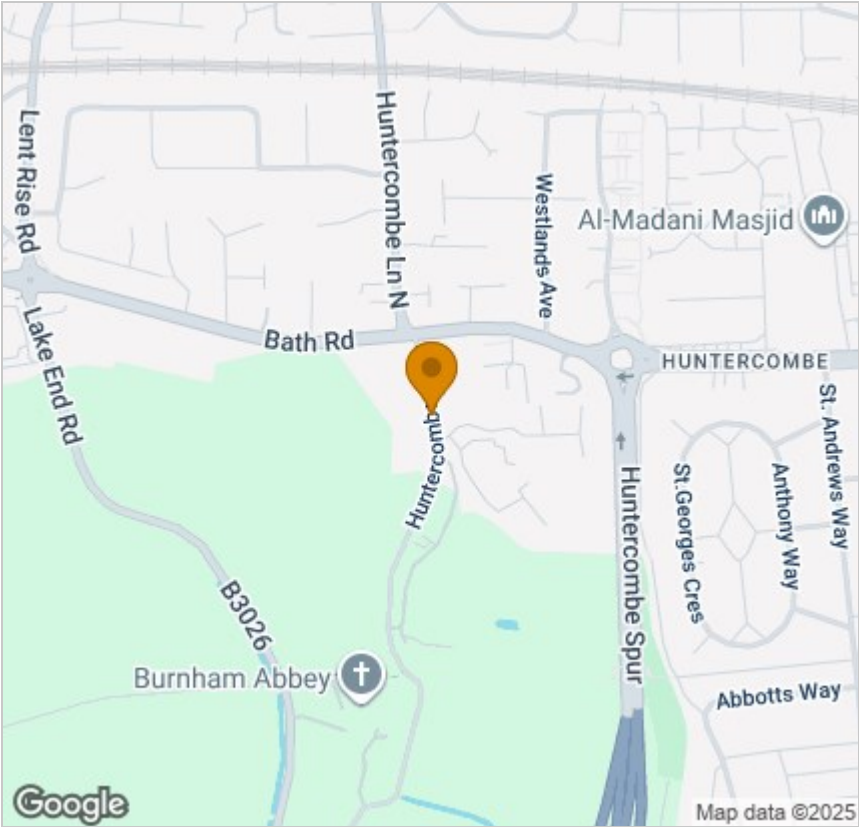
Floor Plan



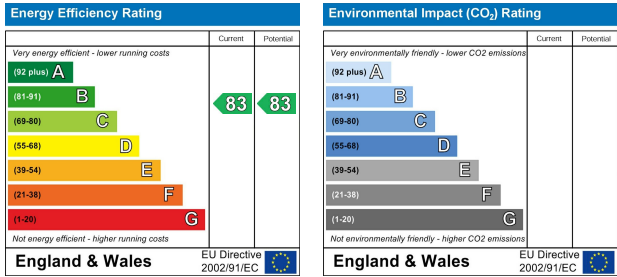
Viewing

Please contact our Haslams New Homes Office on 0118 960 1010 if you wish to arrange a viewing appointment for this property or require further information.

Area Map



Energy Efficiency Graph



These particulars, whilst believed to be accurate are set out as a general outline only for guidance and do not constitute any part of an offer or contract. Intending purchasers should not rely on them as statements of representation of fact, but must satisfy themselves by inspection or otherwise as to their accuracy. No person in this firms employment has the authority to make or give any representation or warranty in respect of the property.